

# T SERIES

safety, quality  
& exceptional performance

Australia's largest enclosure manufacturer, B&R Enclosures, is excited to release the HORIZON S10 Meterbox packed with great new features, you'll wonder how you ever lived without them.

This series provides consumers, electricians, builders and specifiers a meterbox designed for increased safety, quality and performance.

## What's new?

- 485W x 688H x 278D
- 36 pole DIN space
- Rotatable & removable DIN rails
- Lockable 63A current limiter
- Easy cord retention
- Ratchet locking of the cable entry boss
- Gravity catch - positive closing
- Sealable ¼ turn panel retainer with handle
- ¼ turn escutcheon fixing
- Rear mounting straps
- Plastic escutcheon
- Top & bottom link numbering ID
- Ready for mounting on Builder's Pole

## B&R INNOVATIONS FOR TASMANIA



## Living up to the Standards

Meets requirements of AS/NZS3012  
& contains an Aurora approved panel.



### HEAD OFFICE & SALES

#### Hager B&R Pty Ltd

Unit 1/170 Power Street  
Glendenning, NSW 2761  
Ph: (02) 8867 7688  
Fx: (02) 9677 1866

### SALES OFFICE

#### Victoria (Melbourne)

50-52 Sunmore Close  
Heatherston, VIC 3202  
Ph: (03) 8588 8400  
Fx: (03) 8588 8401

#### Tasmania (Launceston)

W.P. Martin Pty Ltd  
85 Elizabeth Street  
Launceston, TAS 7250  
Ph: (03) 6331 5545  
Fx: (03) 6331 4256



Your local wholesaler:



# HORIZON T10

## METERBOX

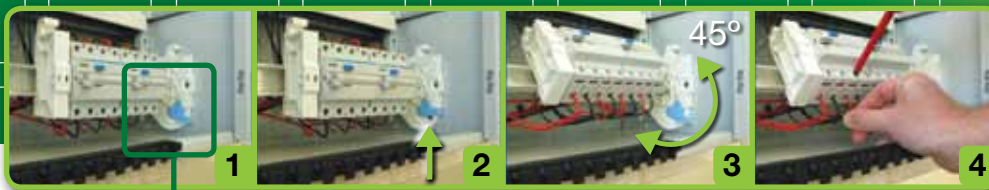
TASMANIAN DOMESTIC APPLICATIONS



safety, quality  
& exceptional performance



# HORIZON T10



### Rota-DIN<sup>®</sup> PP

Removable & rotatable DIN rail for easy access to components.

### Cable Entry<sup>®</sup>

Ratchet slide removes need to screw fix.

### Unique UV Label

Peel and fade resistant.

### Aurora Approved Panel

### New Gravity Catch<sup>®</sup>

Positive closing position. Handle remains flush with door.

### Lockable Meter Isolator

63A Current Limiter

### Safety Cord Retainer<sup>PP</sup>

## Stronger. Safer. Smarter.

### Why HORIZON is the safest choice!

- ✓ **Bevelled door and double folded edges** resist twisting and make for safer handling. Edges are 'soft' and therefore will not cut cables or people.
- ✓ **Rota-DIN<sup>®</sup> Rotatable DIN rail<sup>PP</sup>** allows much greater visibility to terminal connection points of the switchgear allowing safer termination of cables and better inspection capabilities.
- ✓ **Insulated Escutcheons<sup>®</sup>** New moulded plastic escutcheon with captive 1/4 turn screws preventing any possibility of accidental shorting or shock.
- ✓ **Enclosure hanging brackets** allow any trades person to mount the enclosure from a temporary pole to a permanent position without being exposed to live parts.
- ✓ **Panel retainer** is now captive (stays with the panel) preventing nuts from falling off and being lost.
- ✓ **Covered labelling section** prevents labels peeling and falling off.
- ✓ **N/E links** are individually and uniquely numbered with increased visibility of numbers above and below link.

### NEW SAFETY FEATURE!

**Cord Retainer<sup>PP</sup>** for easy retention of extension cords to AS/NZS3012 without using ties.

<sup>PP</sup> Patent Pending <sup>®</sup> Registered Design

