

S SERIES

safety, quality
& exceptional performance

Australia's largest enclosure manufacturer, B&R Enclosures, is excited to release the HORIZON S80 Meterbox packed with great new features, in an all-in-one solution enclosure, you'll wonder how you ever lived without it.

This series provides consumers, electricians, builders and specifiers a meterbox designed for increased safety, quality and performance.

✓ Approved for single & multi-phase installations, combining Electrical, Telecom & Gas utilities in one aligned enclosure.

3in1

ELECTRICAL
TELECOM
GAS



The HORIZON S80...

One
Solution
Enclosure

...also avail separately!

B&R INNOVATIONS
FOR SOUTH AUSTRALIA



Living up to the Standards

Meets requirements of AS/NZS3000
& Opticomm's fibre-to-the-home specification.
Powder coated finish RAL7035.
HZN/COM1 - IP55,
S10 and HZN/GAS1 - IP23.



:hager B&R

HEAD OFFICE & SALES

Hager B&R Pty Ltd
Unit 1/170 Power Street
Glendenning, NSW 2761
Ph: (02) 8867 7688
Fx: (02) 9677 1866

SALES OFFICE

South Australia
505 Grand Junction Road
Wingfield, SA 5013
Ph: (08) 8417 6200
Fx: (08) 8268 3675



H O R I Z O N
S80

COMBINED SERVICES

SOUTH AUSTRALIAN DOMESTIC APPLICATIONS



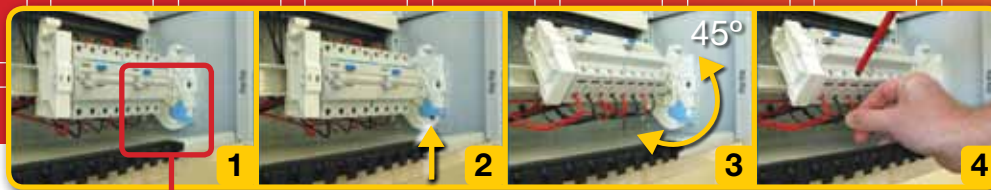
NEW
SAFETY
& time saving
features

electrical,
telecommunications
& gas...
one solution enclosure

B&R

Your local wholesaler:

© hager B&R Australia
www.hagerbr.com.au



**24
POLE
DIN**

**HORIZON
S10**
Electrical Enclosure

Rota-DIN[®] PP
Removable & rotatable DIN rail
for easy access to components.

Unique UV Label
Peel and fade resistant.

**Meter isolator
Lock off**

HZN/Com1
Telecom Enclosure



Fibre conduit holes
Allows surface mounting of
incoming fibre conduit.

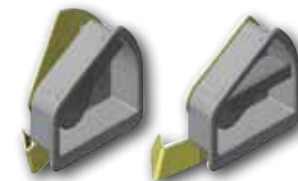
Square key lock

Waterproof panel
Allows free mounting of fibre
optic equipment. IP55 Cat 2.

HZN/Gas1
Gas Meter Enclosure

**APA Group
Approved**

Safety vented door
Louvered vented door to meet
latest gas standards.



New gravity catch
Positive closing position.
Handle remains flush with door.

Electrical,
Telecommunications
& Gas...
One Solution Enclosure

STRONGER. SAFER. SMARTER.

S10 - Electrical Enclosure:

✓ **Rota-DIN[®] Rotatable DIN rail^{PP}** allows easier cable entry and greater visibility to switch gear connections, reducing wiring time and increasing safety.

✓ **Insulated Escutcheons^R** New moulded plastic escutcheon with captive 1/4 turn screws preventing any possibility of accidental shorting or shock.

✓ **N/E links** are individually and uniquely numbered with increased visibility of numbers above and below link.

HZN/Com1 - Telecom Enclosure:

✓ Incoming fibre conduit holes to allow surface mounting of the fibre conduit. Also includes a waterproof chipboard panel for free mounting of fibre optic equipment. Square keyed lock door.

HZN/Gas1 - Gas Meter Enclosure:

✓ **New positive closing Gravity Catch Handle.**

✓ **Bevelled door and double folded edges** resist twisting and make for safer handling.

^{PP} Patent Pending [®] Registered Design

NOTE: While the S80 is a great all-in-one solution, each section is also available separately.

688 mm

278 deep

430 mm

200 deep

500 mm

278 deep

panel type 1: 365w x 350h

panel size: 350w x 400h

485mm (2 bricks) wide