

Contact

Hager Ltd.

Hortonwood 50
Telford
Shropshire
TF1 7FT

Customer Services and Sales Hotline Call our Customer Services
Centre for all your national
sales enquiries. **0870 240 2400**
sales@hager.co.uk

Customer Services and Sales Faxline **0870 240 0400**

Technical Helpline Technical Engineers offer both
national and local support. **0870 607 6677**
technical@hager.co.uk

Technical Faxline **01952 675557**

Hager Online Visit our website for up to date
news on Hager and for general
brand information e-mail us. www.hager.co.uk
info@hager.co.uk



Ashley Grid

product guide

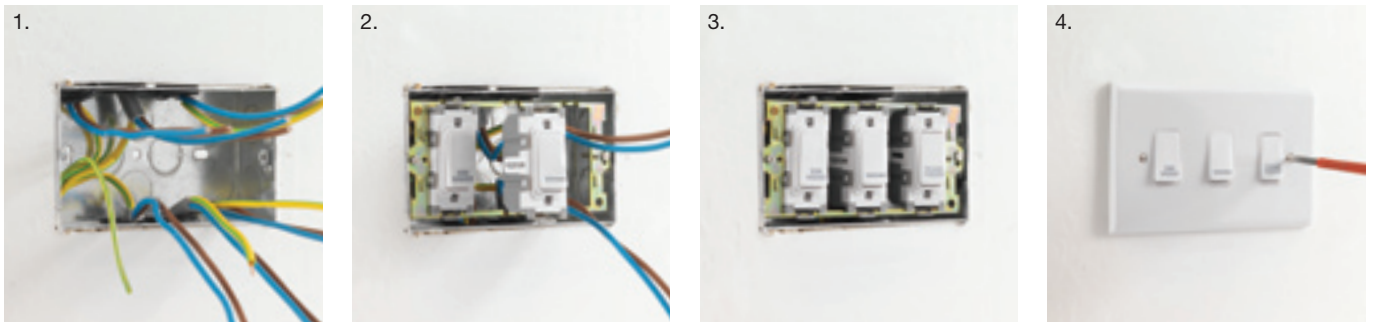
ashley

Ashley Grid

The Ashley range of grid switches are ideal for domestic and commercial applications.



The four step assembly process allows the installer flexibility at every stage



Frontplates are available to complement our most popular ranges of wiring accessories. Additional finishes are available made to order.



Simple installation with style

Modules can easily be upgraded without the need to remove the mounting frame

Durability and safety have been paramount in the design and development of the Ashley Grid range so that, once installed, you can have every assurance that our products will live up to your expectations.

Selection chart - Grid

Frames

Part Reference	Description
PGF1	1 Gang Frame
PGF2	2 Gang Frame
PGF3	3 Gang Frame
PGF4	4 Gang Frame



Face Plates

Gang	Raised Plate			Flat Plate	
	White Moulded	Mirror Chrome	Satin Chrome	Mirror Chrome	Satin Chrome
1	PGPP1	PGPMC1	PGPSC1	FGPMC1	FGPSC1
2	PGPP2	PGPMC2	PGPSC2	FGPMC2	FGPSC2
3	PGPP3	PGPMC3	PGPSC3	FGPMC3	FGPSC3
4	PGPP4	PGPMC4	PGPSC4	FGPMC4	FGPSC4
6	PGPP6	PGPMC6	PGPSC6	FGPMC6	FGPSC6
8	PGPP8	PGPMC8	PGPSC8	FGPMC8	FGPSC8

Modules and Switches

Part Reference	Description
PGPS12	10A Press Switch Single Pole
PGKSDP2	20A DP Key Switch
PGPMDP21	20A Switch Push to Make
PGS211	20A 1 Way SP Switch
PGS212	20A 2 Way SP Switch
PGS216	20A Intermediate Switch
PGSDP2	20A 1 Way DP Switch
PGB1	Blank Module
PGFU13	13A Fuse Unit



Printed Switches

Part Reference	Printed Text
PGSDP2/CHD	"Cooker Hood"
PGSDP2/DW	"Dish Washer"
PGSDP2/EF	"Extractor Fan"
PGSDP2/FF	"Fridge Freezer"
PGSDP2/FR	"Freezer"
PGSDP2/FRI	"Fridge"
PGSDP2/HB	"Hob"
PGSDP2/MW	"Microwave"
PGSDP2/TD	"Tumble Dryer"
PGSDP2/WD	"Waste Disposal"
PGSDP2/WM	"Washing Machine"

