

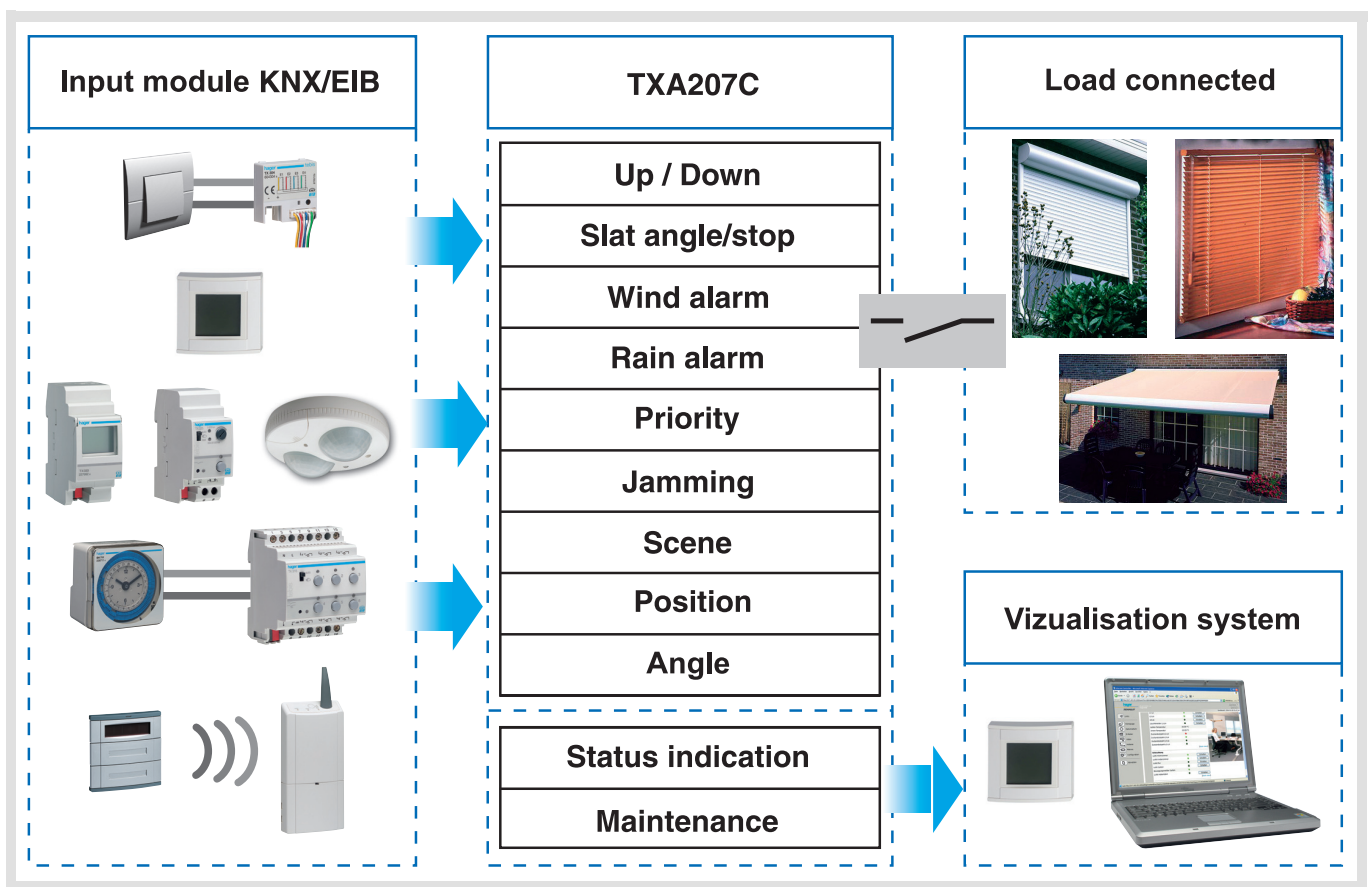
ETS 3

- Catalog
- Outputs
 - 4 outputs
 - 6 outputs
 - 10-output

Tebis Application software

TL207A V 2.x Lighting and Shutters / Blind
Function Shutter / Blind

	Product reference	Product designation
	TXA 207C	Output module 10-fold 16A 230V~



Summary

1. Presentation of the Shutter/Blind functions of the TL207A application.....	2
2. Configuration and parameterising of the Shutter/Blind functions.....	3
2.1 General parameters.....	3
2.2 Objects list.....	4
2.3 Functions description.....	4
3. Main characteristics	14
4. Physical addressing.....	14

1. Presentation of the Shutter/Blind functions of the TL207A application

The TL207A application software allows each output to be individually configured for Lighting or Shutters/Blinds applications. The main functions are the following :

■ Up/Down

The Up/Down Function allows moving up or down a shutter, a blind with inclinable slats, an awning, a Venetian blind, etc. This function also allows opening and closing electric curtains. The command may come from pushbuttons (long hold-down), switches or automatic controls.

■ Slat angle/Stop

The Slat angle/Stop function allows inclining the slats of a blind or stopping its current movement. This function allows modifying the occultation or the direction of the light beams coming from outside. The command comes from pushbuttons : Press briefly the Up/Down pushbutton.

■ Position in %

The Position in % function allows putting a shutter or a blind in a desired position expressed in % of closure.

■ Slat angle

The Slat angle function allows inclining the slats of a blind into a desired position expressed in degrees (0° to 180°).

■ Wind alarm and rain alarm

The Alarm functions allow putting a shutter or a blind in a parameterisable predefined status. These functions have the highest priority. No other command is taken into consideration if an Alarm is active. Only the end of the alarm enables again the other commands.

■ Priority

The Priority function allows forcing a shutter or a blind into a predefined position. This command has priority, but at a lower level than the alarms. No other command is taken into consideration if a priority is active. Only end of priority or alarm commands will be taken into consideration.

■ Jamming

The Jamming function allows locking a shutter or a blind in its current position.

■ Scene

The Scene function allows grouping a set of outputs. These outputs can be put in a parameterisable predefined status. Pressing one single pushbutton activates a scene. Each output may be integrated in 32 different scenes.

■ Status indication

The Status indication function allows sending on the bus :

- the position of the shutter or the blind
- the current operating mode of the output (Alarm, Priority, Jamming, Normal)

■ Manual mode

The Manual mode isolates the product from the bus. In this mode, it is possible to override manually each output.

2. Configuration and parameterising of the Shutter/Blind functions

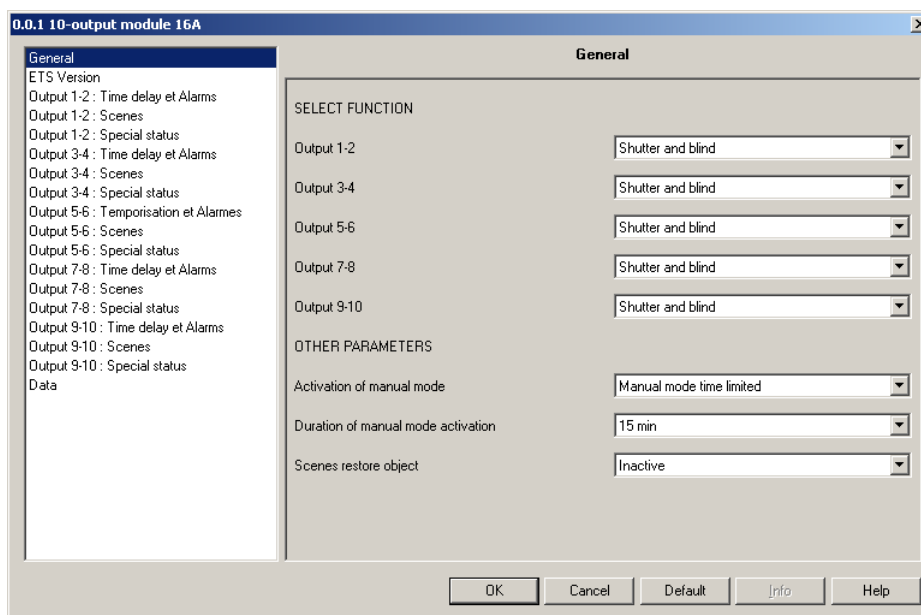
2.1 General parameters

■ ETS version selection

This parameter allows the presentation of the parameters to be optimised according to the ETS version used. Go to the ETS Version screen and select the required version : ETS2 or ETS3. Default value : ETS3.

■ Select function

Go to the General screen and select Shutter/Blind for all outputs. The default setting of the outputs is Lighting.



Screen 1

■ Other parameters

→ Parameters

Designation	Description	Values
Activation of the Manual mode*	This parameter enables or disables the 2 position switch located on the front side of the product. This switch allows selecting the Manual mode or the Auto mode. In Manual mode, the outputs may be controlled using the pushbuttons on the front side of the product. Push buttons 1/3/5/7/9 : Up Push buttons 2/4/6/8/10 : Down In Auto mode, the outputs are controlled by the instructions coming from the bus.	Manual mode authorized, Manual mode inhibited, Manual mode time limited. - Manual mode authorized : the manual mode can be activated at any time. - Manual mode inhibited : the switch is permanently disabled. Switching to manual mode is impossible. - Manual mode time limited : the manual mode can be activated for a limited duration. Default value : Manual mode authorized.
Duration of manual mode activation**	This parameters defines the duration of activation of the manual mode.	15, 30, 60 min. Default value : 15 min.
Scenes restore object (see also Scene function)	If the value is Active, the values linked with the scenes at the last download are restored when receiving this object.	Inactive, Active. Default value : Inactive.

* When the position of the switch is not in line with the status of the product, the indicators associated with the outputs light up sequentially.

** This parameter only is visible if the Manual mode activation parameter has the value : Manual mode time limited.

→ Description of the Manual mode

The pushbuttons on the front side of the product are coupled as follows : 1-2, 3-4, 5-6, 7-8 and 9-10 :

- Push buttons 1/3/5/7/9 : Up
- Push buttons 2/4/6/8/10 : Down

For safety reasons, simultaneous Up and Down commands are impossible.

If an Up command is active, pressing the Down pushbutton opens the Up contact and closes the Down contact.

If a Down command is active, pressing the Up pushbutton opens the Down contact and closes the Up contact.

When the product is delivered, before any configuration, the product operates as indicated here above in manual mode.

2.2 Objects list

Number	Name	Object Function	Length	C	R	W	T	U	Priority	Number	Name	Object Function	Length	C	R	W	T	U	Priority
0	Output 1-2	Up/Down	1 bit	C	R	W	-	U	Low	45	Output 9-10	Scene	1 Byte	C	R	W	-	U	Low
1	Output 1-2	Slat angle/Stop	1 bit	C	R	W	-	U	Low	46	Output 9-10	Status indication (1 bit)	1 bit	C	R	-	T	U	Low
2	Output 1-2	Priority	2 bit	C	R	W	-	U	Low	52	Output 1-2	Jamming	1 bit	C	R	W	-	U	Low
3	Output 1-2	Wind alarm	1 bit	C	R	W	-	U	Low	53	Output 1-2	Scene 1 bit	1 bit	C	R	W	-	U	Low
4	Output 1-2	Rain alarm	1 bit	C	R	W	-	U	Low	54	Output 1-2	Position	1 Byte	C	R	W	-	U	Low
5	Output 1-2	Scene	1 Byte	C	R	W	-	U	Low	55	Output 1-2	Slat angle	1 Byte	C	R	W	-	U	Low
6	Output 1-2	Status indication (1 bit)	1 bit	C	R	-	T	U	Low	56	Output 1-2	Status indication	1 Byte	C	R	-	T	U	Low
10	Output 3-4	Up/Down	1 bit	C	R	W	-	U	Low	64	Output 3-4	Jamming	1 bit	C	R	W	-	U	Low
11	Output 3-4	Slat angle/Stop	1 bit	C	R	W	-	U	Low	66	Output 3-4	Position	1 Byte	C	R	W	-	U	Low
12	Output 3-4	Priority	2 bit	C	R	W	-	U	Low	67	Output 3-4	Slat angle	1 Byte	C	R	W	-	U	Low
13	Output 3-4	Wind alarm	1 bit	C	R	W	-	U	Low	68	Output 3-4	Status indication	1 Byte	C	R	-	T	U	Low
14	Output 3-4	Rain alarm	1 bit	C	R	W	-	U	Low	76	Output 5-6	Jamming	1 bit	C	R	W	-	U	Low
15	Output 3-4	Scene	1 Byte	C	R	W	-	U	Low	78	Output 5-6	Position	1 Byte	C	R	W	-	U	Low
16	Output 3-4	Status indication (1 bit)	1 bit	C	R	-	T	U	Low	79	Output 5-6	Slat angle	1 Byte	C	R	W	-	U	Low
20	Output 5-6	Up/Down	1 bit	C	R	W	-	U	Low	80	Output 5-6	Status indication	1 Byte	C	R	-	T	U	Low
21	Output 5-6	Slat angle/Stop	1 bit	C	R	W	-	U	Low	88	Output 7-8	Jamming	1 bit	C	R	W	-	U	Low
22	Output 5-6	Priority	2 bit	C	R	W	-	U	Low	90	Output 7-8	Position	1 Byte	C	R	W	-	U	Low
23	Output 5-6	Wind alarm	1 bit	C	R	W	-	U	Low	91	Output 7-8	Slat angle	1 Byte	C	R	W	-	U	Low
24	Output 5-6	Rain alarm	1 bit	C	R	W	-	U	Low	92	Output 7-8	Status indication	1 Byte	C	R	-	T	U	Low
25	Output 5-6	Scene	1 Byte	C	R	W	-	U	Low	100	Output 9-10	Jamming	1 bit	C	R	W	-	U	Low
26	Output 5-6	Status indication (1 bit)	1 bit	C	R	-	T	U	Low	102	Output 9-10	Position	1 Byte	C	R	W	-	U	Low
30	Output 7-8	Up/Down	1 bit	C	R	W	-	U	Low	103	Output 9-10	Slat angle	1 Byte	C	R	W	-	U	Low
31	Output 7-8	Slat angle/Stop	1 bit	C	R	W	-	U	Low	104	Output 9-10	Status indication	1 Byte	C	R	-	T	U	Low
32	Output 7-8	Priority	2 bit	C	R	W	-	U	Low	113	All outputs	Maintenance	2 Byte	C	R	-	T	U	Low
33	Output 7-8	Wind alarm	1 bit	C	R	W	-	U	Low										
34	Output 7-8	Rain alarm	1 bit	C	R	W	-	U	Low										
35	Output 7-8	Scene	1 Byte	C	R	W	-	U	Low										
36	Output 7-8	Status indication (1 bit)	1 bit	C	R	-	T	U	Low										
40	Output 9-10	Up/Down	1 bit	C	R	W	-	U	Low										

2.3 Functions description

■ Closure type function

Designation	Description	Values
Closure type	This parameter allows selecting a Shutter or Blind type operation. A Blind type operation gives access to additional parameters to control the slat angle. When the closure type is Shutter, the Slat angle object is not visible.	Shutter and blind, Shutter. Default value : Shutter and blind.

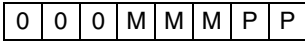
■ Up/Down and Status indication functions

The Up/Down Function allows moving up or down a shutter, a blind with inclinable slats, an awning, a Venetian blind, etc. This function also allows opening and closing electric curtains. This function is started by the Up/Down object.

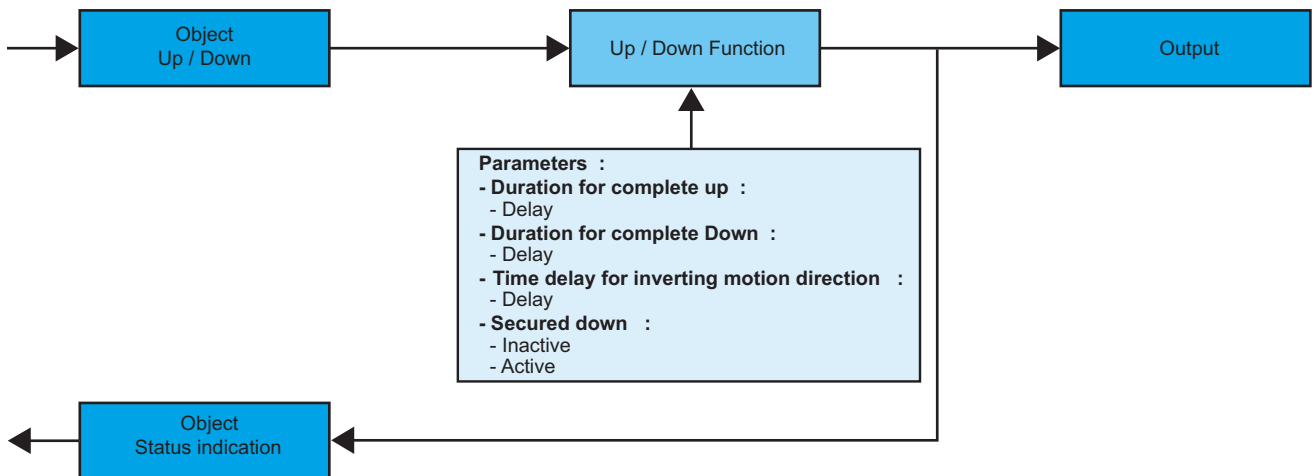
The Status indication function allows sending on the bus :

- the position of the shutter or the blind
- the current operating mode of the output (Alarm, Priority, Jamming, Normal)

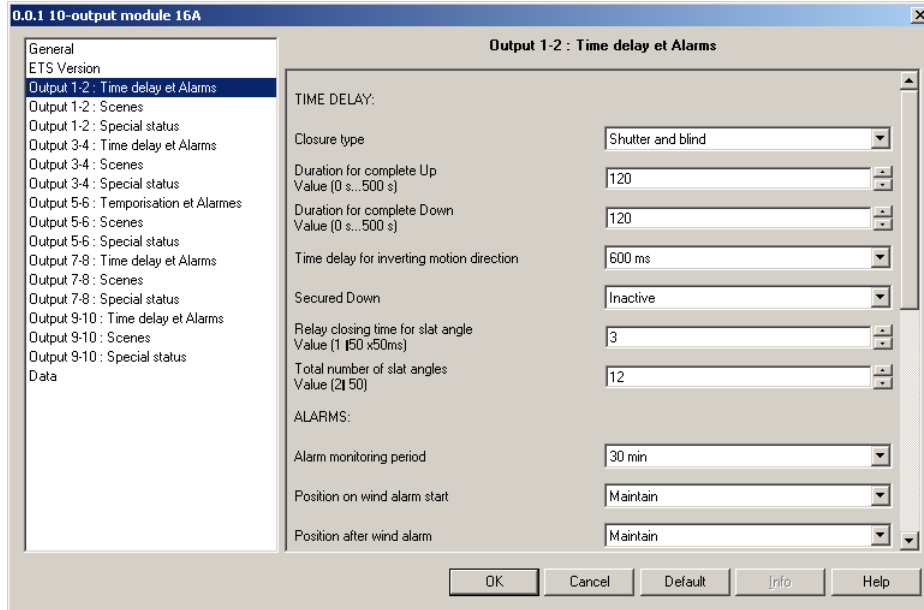
→ Description of the Status indication object (1 byte) :



P : Output position	00 = Intermediate position 01 = High position 10 = Low position
M : Output mode	000 = Normal 001 = Priority 010 = Wind alarm 011 = Rain alarm 100 = Jamming



→ Parameters

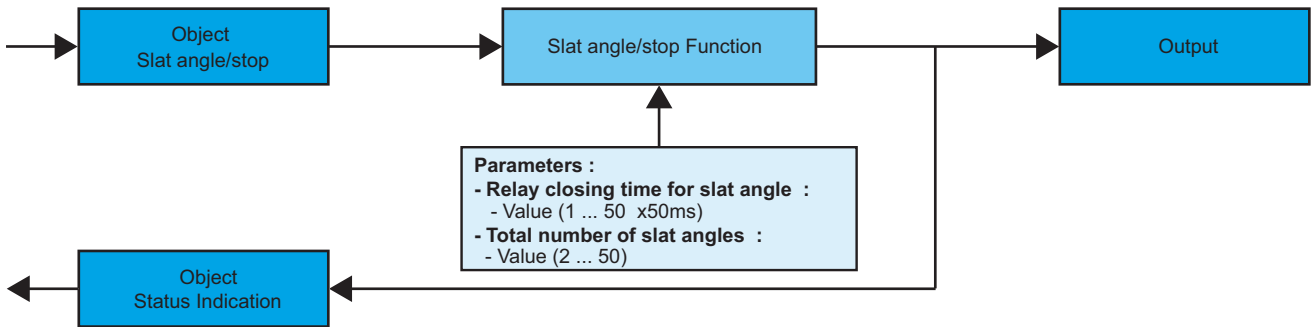


Screen 2

Designation	Description	Values
Duration for complete up	This parameter defines the closing time of the contact for a complete Up movement.	0 to 500 s by steps of 1 s Default value : 120 s.
Duration for complete Down	This parameter defines the closing time of the contact for a complete Down movement.	0 to 500 s by steps of 1 s Default value : 120 s.
Time delay for inverting motion direction	This parameter defines the stopping time of the shutter or blind before reversing the direction of rotation : the 2 output contacts are open.	600 ms, 1 s, 2 s, 3 s Default value : 600 ms.
Secured down (security)	This procedure allows controlling a down movement as long as a pushbutton is pressed down.	Inactive, Active. Default value : Inactive.

■ Slat angle/Stop function

The Slat angle/Stop function allows inclining the slats of a blind or stopping its current movement. This function allows modifying the occultation or the direction of the light beams coming from outside. This function is started by the Slat angle/Stop object. The desired angle is reached by means of successive command pulses. Parameterising consists in programming the duration of a command pulse and the number of pulses to go from an angle of 0° to an angle of 180°.



→ Parameters setting screen : see "Screen 2".

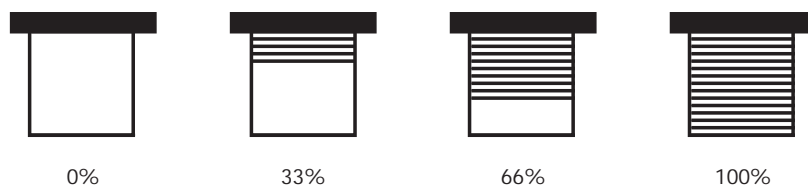
→ Parameters

Designation	Description	Values
Relay closing time for slat angle	This parameter allows defining the closing time of the contacts to carry out one slat step : 50 ms x multiplier.	1 to 50 Default value : 3.
Total number of slat angles*	This parameter defines the total number of slat steps to go from the position inclined downwards to the position inclined upwards.	2 to 50 Default value : 12.

*Before parameterising the Total number of slat angles, it is indispensable to define the contacts closing time to carry out a slat step.

■ Position in % function

The Position in % function allows putting a shutter or a blind in a desired position expressed in % of closure. This function is started by the Position object (EIS 6).



■ Slat angle function

The Slat angle function allows inclining the slats of a blind into a desired position expressed in degrees (0° to 180°). This function is started by the Slat angle object (EIS 9).

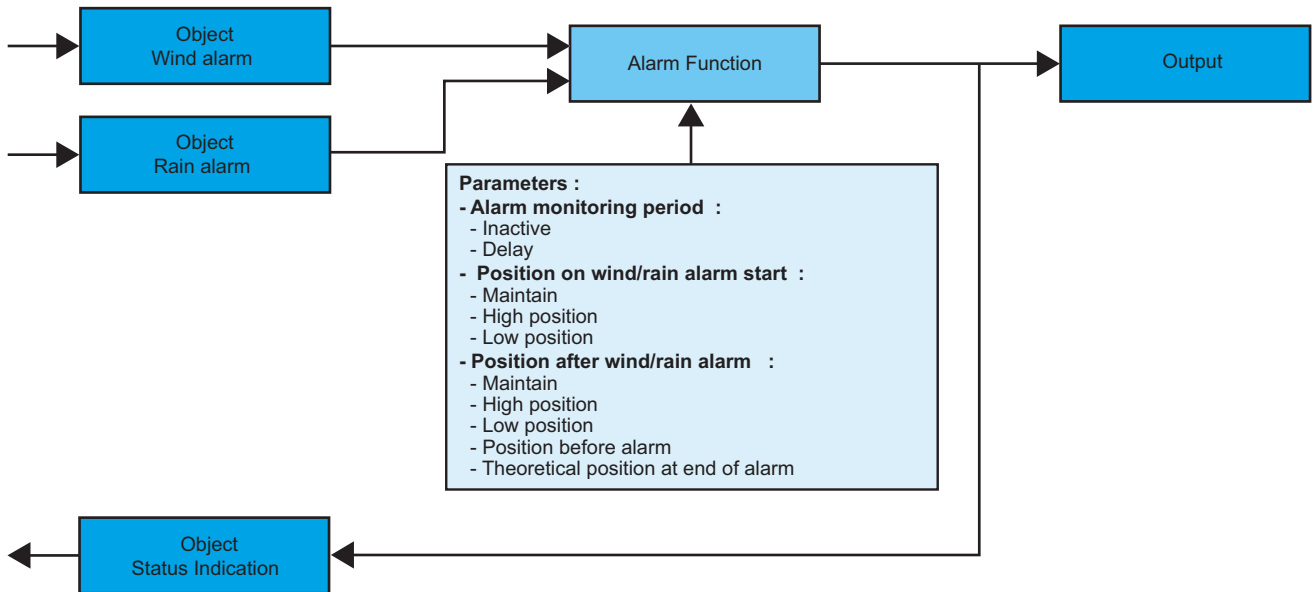


Blinds slats closing
Angle : 180°
Slats inclined downwards

Blinds slats opening
Angle : 0°
Slats inclined upwards

■ Wind Alarm and Rain Alarm functions

The Alarm functions allow putting a shutter or a blind in a parameterisable predefined status. The wind alarm is started by the Wind Alarm object and the rain alarm is started by the Rain Alarm object. These functions have the highest priority. The wind alarm has a higher priority level than the rain alarm. No other command is taken into consideration if an Alarm is active. Only the end of the alarm enables again the other commands.



→ Parameters setting screen : see "Screen 2".

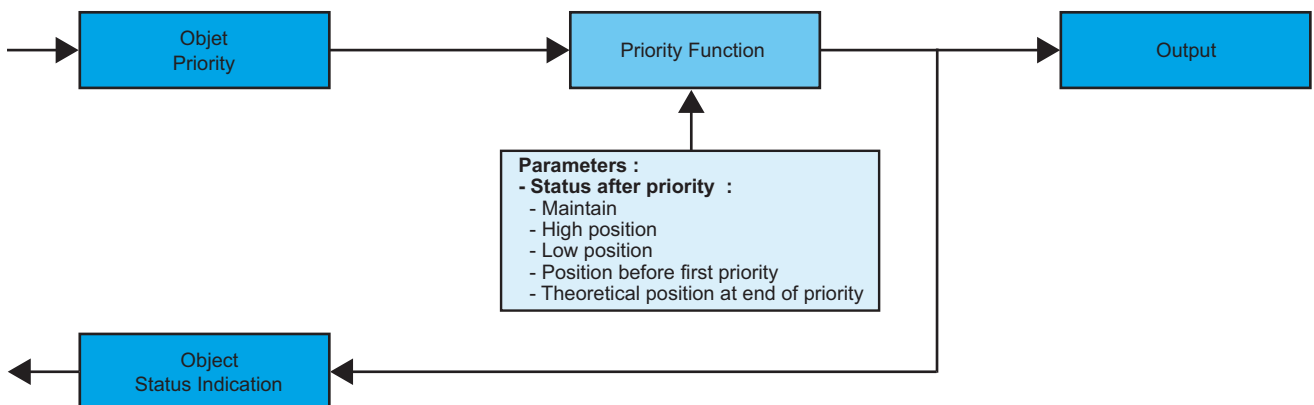
→ Parameters

Designation	Description	Values
Alarm monitoring period	This parameter defines the maximum duration between 2 instructions received on the Alarm objects. If no instruction is received within this duration, the shutters/blinds will be positioned at the position defined by the Position on alarm start parameter.	Inactive, 5 s, 30 s, 1 min, 5 min, 10 min, 30 min, 1 h, 2 h, 3 h, 5 h, 24 h. Default value : 30 min.
Position on wind alarm start	This parameter defines the position of the shutter or blind when the Wind alarm function is activated.	Maintain, High position, Low position. Default value : Maintain.
Position after wind alarm	This parameter defines the position of the shutter or blind at the end of the Wind alarm.	Maintain, High position, Low position, Position before alarm, Theoretical position at end of alarm. The value Theoretical position at the end of alarm sets the shutter or blind to the position it would have been at if no alarm had appeared. Default value : Maintain.
Position on rain alarm start	This parameter defines the position of the shutter or blind when the Rain alarm function is activated.	Maintain, High position, Low position. Default value : Maintain.
Position after rain alarm	This parameter defines the position of the shutter or blind at the end of the Rain alarm.	Maintain, High position, Low position, Position before alarm, Theoretical position at end of alarm. The value Theoretical position at the end of alarm sets the shutter or blind to the position it would have been at if no alarm had appeared. Default value : Maintain.

■ Priority function

The Priority function allows forcing a shutter or a blind into a predefined position. This function is started by the Priority object (EIS priority).

This command has priority, but at a lower level than the alarms. No other command is taken into consideration if a priority is active. Only end of priority or alarm commands will be taken into consideration.



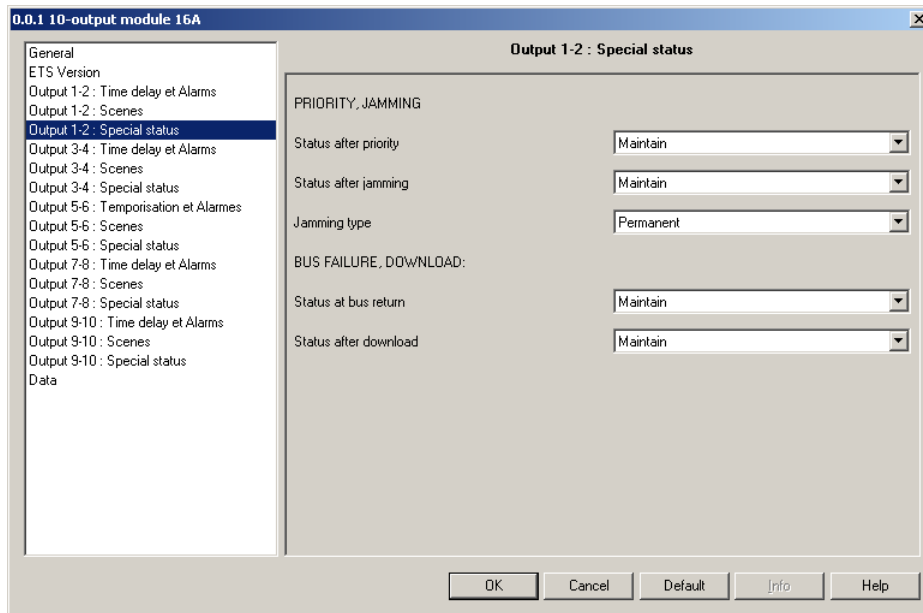
→ Priority function description (EIS priority).

Bit 1	Bit 0
Output behaviour	

Output behaviour	00 = Priority end 01 = Priority end 10 = OFF priority 11 = ON priority
------------------	---

OFF priority = Up, ON priority = Down.

→ Parameters



Screen 3

Designation	Description	Values
Status after priority	This parameter defines the position of the shutter or blind at the end of the Priority.	Maintain, High position, Low position, Position before first priority, Theoretical position at end of priority. Maintain : This value maintains the position active during Priority. High position : This value moves the shutter or blind up. Low position : This value moves the shutter or blind down. Position before first priority : This value sets the shutter or blind to the position it had before the Priority. Theoretical position at end of priority : This value sets the shutter or blind to the position it would have been at if no Priority had taken place. Default value : Maintain.

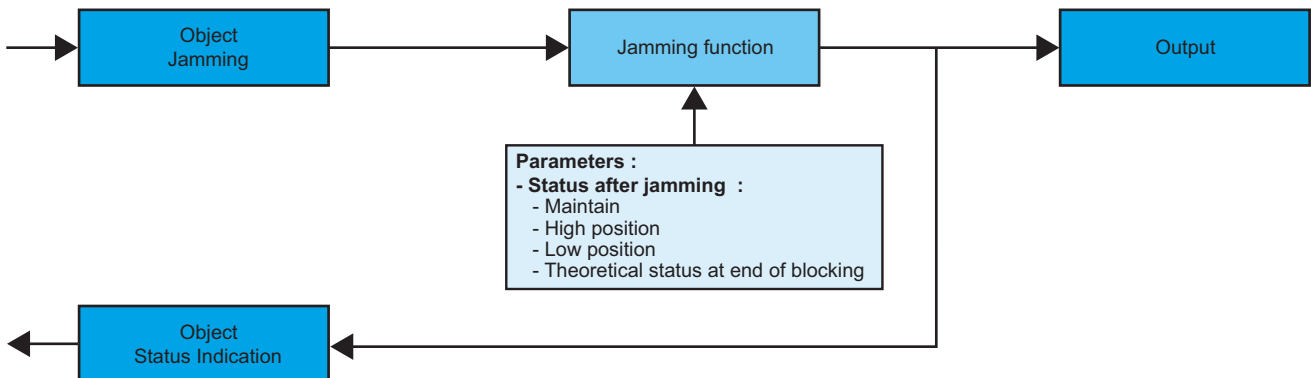
■ Jamming function

The Jamming function allows locking a shutter or a blind in its current position.

This function is started by the Jamming object.

This function has a lower priority level than the Alarms and the Priorities.

A Jamming end command ends the jamming and allows again taking the commands from the bus into consideration. The triggering of an alarm or a priority command ends the jamming.



→ Parameters setting screen : see "Screen 3".

→ Parameters

Designation	Description	Values
Status after jamming	This parameter defines the position of the shutter or blind at the end of the Jamming.	Maintain, High position, Low position, Theoretical status at end of blocking. Maintain : This value maintains the position active during Jamming. High position : This value moves the shutter or blind up. Low position : This value moves the shutter or blind down. Theoretical status at end of blocking : This value sets the shutter or blind to the position it would have been at if no Jamming had taken place. Default value : Maintain.
Jamming type	This parameter defines whether Jamming is permanent or time-limited.	Permanent, Time limited. Default value : Permanent.
Jamming duration*	This parameter defines the Jamming duration.	Inactive, 0 s, 1 s, 2 s, 3 s, 5 s, 10 s, 15 s, 20 s, 30 s, 40 s, 45 s, 50 s, 1 min, 1 min 15 s, 1 min 30 s, 2 min, 2 min 30 s, 3 min, 4 min, 5 min, 6 min, 7 min, 8 min, 9 min, 10 min, 11 min, 12 min, 13 min, 14 min, 15 min, 20 min, 30 min, 40 min, 50 min, 1 h, 1 h 30 min, 2 h, 2 h 30 min, 3 h, 3 h 30 min, 4 h, 5 h, 6 h, 12 h, 24 h. Default value : 1 h.

* This parameter is only visible when the Jamming type parameter has the value : Time limited.

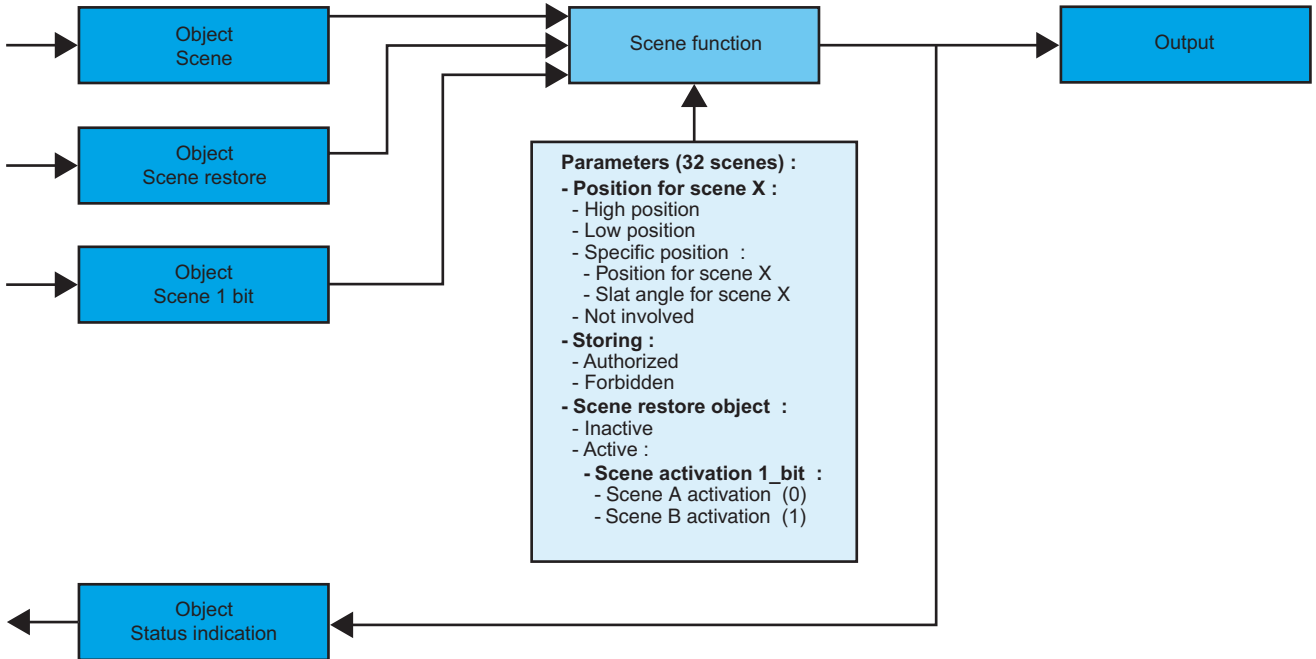
■ Scene function

A scene allows controlling a group of outputs. Each of the outputs of this group will be put in a status predefined for this scene. A scene is started by the Scene object.

The group of outputs is created previously by establishing the link between the outputs that must belong to the scene and the pushbutton that will trigger the scene. Each output may be integrated in 32 different scenes.

The status of each output may be defined by parameterising, by learning in the room using the pushbuttons of the installation or on the product.

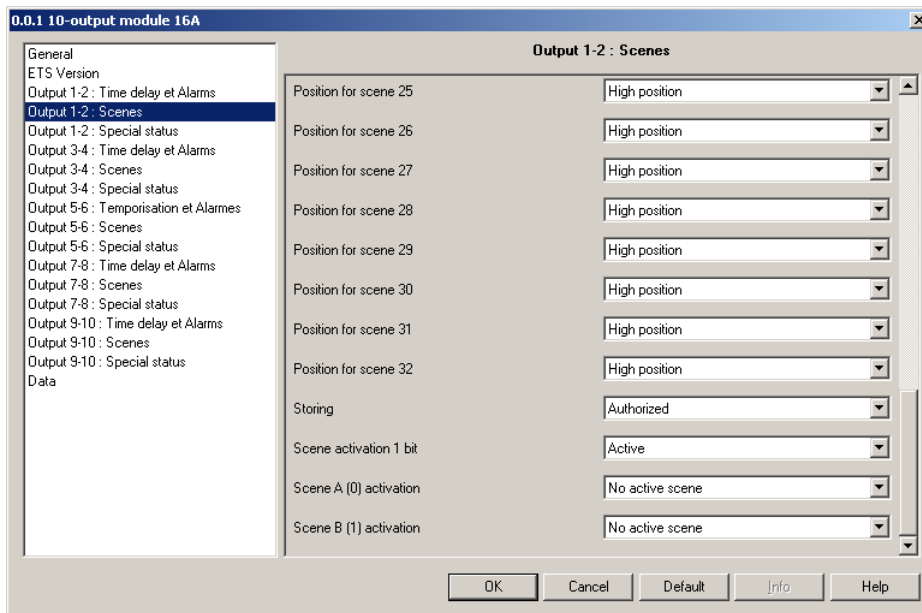
A. Configuration and storing by means of parameterising



→ Description of scene object (1 byte)

7	6	5	4	3	2	1	0
Learn	X	Scene number					

→ Parameters



Screen 4

Designation	Description	Values
Position for scene X	This parameter defines the position of the shutter or blind associated with scene X.	High position, Low position, Specific position, Not involved. Note : if the value of the parameter is Not involved, the scene will not influence this output. Default value : High position.
Position for scene X in %	When the parameter Position for scene X has the value Specific position, this parameter defines the position of the shutter or blind as a closure percentage.	0 ... 100 % Default value : 5%.
Slat angle scene X	When the parameter Position for scene X has the value Specific position and the parameter Closure type has the value Shutter and blind, this parameter defines the angle of the slats of the blind.	0 ... 180° Default value : 0°.
Storing	This parameter authorises or forbids the learning of the scene.	Authorized, Forbidden. Default value : Authorized.
Scene activation 1 bit	This parameter allows 2 scenes among the 32 possible ones to be activated, with the help of the object Scene 1 bit.	Inactive, Active. Default value : Inactive.
Scene A (0) activation / Scene B (1) activation*	When the parameter Scene activation 1 bit has the value Active, the parameters Scene activation A and Scene activation B must be set. These parameters define the scenes to be activated for the two values of the Scene 1 bit object.	No active scene, Scene 1 to scene 32. Default value : No active scene.

* These parameters only are visible if the Scene activation 1 bit parameter has the value : Active.

Note : a Scenes restore object, parameterised in the general screen, allows the values linked with the outputs to be restored at the last download (see paragraph "General parameters").

B. Learning and storing in the room

This procedure allows modifying and storing a scene by means of local action on the pushbuttons located in the room.

- Activate the scene pressing briefly on the room pushbutton that triggers the scene.
- Set the outputs to the desired status using the pushbuttons that control them individually.
- Store the status of the outputs pressing for more than 5 sec the room pushbutton that triggers the scene. The storage is indicated by an alternate movement of 6 s of the shutters and blinds controlled by the outputs involved.

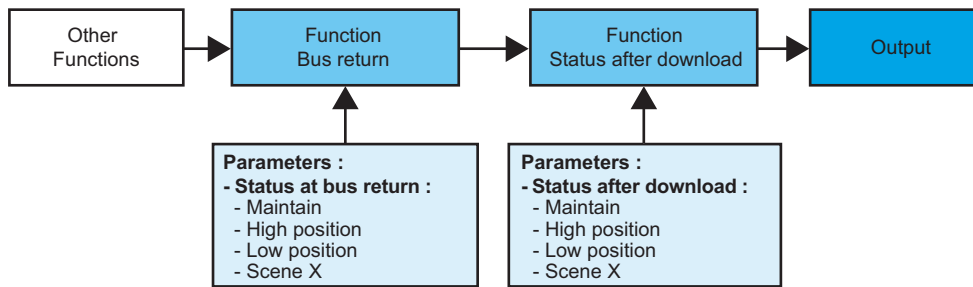
C. Learning and storing on the product

This procedure allows modifying and storing a scene by means of local action on the pushbuttons located on the front side of the products. This procedure also allows an output to be removed from a scene (Not involved).

- Activate the scene pressing briefly on the room pushbutton that triggers the scene.
- Store the status of the outputs pressing for more than 5 sec the room pushbutton that triggers the scene.
The switching to the learning mode is indicated by an alternate movement of 6 s of the shutters and blinds controlled by the outputs involved.
- As soon as the indicators associated with the outputs blink slowly, press briefly and repeatedly the pushbuttons linked with the outputs to set the outputs to the desired status. The indicators associated with the outputs show the status chosen :
 - OFF if the value selected for the scene is Low position.
 - Red and continuously ON if the value selected for the scene is High position.
 - Red and quickly blinking if the value selected for the scene is Not involved.
- Store the status selected for this scene pressing for a time longer than 3 sec the pushbutton associated with the output. The storage is indicated by the return of the slow blinking of the indicators associated with the outputs.
- Repeat the previous step for each of the outputs of the scene.

■ Special statuses

The parameters grouped in this section allow defining the behaviour of the outputs in some special cases in Auto mode.



→ Parameters setting screen : see "Screen 3".

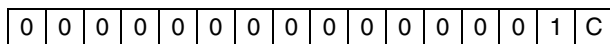
→ Parameters

Designation	Description	Values
Status at bus return	This parameter defines the position of the shutter or blind at the bus return.	Maintain, High position, Low position, Scene X. Default value : Maintain.
Status after download	This parameter defines the position of the shutter or blind after a download.	Maintain, High position, Low position, Scene X. Default value : Maintain.

■ Maintenance function

The Maintenance function allows transmitting general data of the product by means of the Maintenance object.

→ Description of maintenance object (2 bytes)



C : Operating mode of the product	0 : Auto 1 : Manual
-----------------------------------	------------------------

3. Main characteristics

Max. number of group addresses	252
Max. number of links	254
Objects	57 total : 11 per shutter output 1 for scenes restoration 1 for maintenance

4. Physical addressing

To perform physical addressing or check for the presence of the bus, press the lighted pushbutton located above the label holder on the right of the product.

Indicator on = bus present and product in physical addressing.

The product remains in physical addressing until the physical address is transmitted by ETS. Pressing a second time allows leaving the physical addressing mode.

Physical addressing may be performed in Auto or in Manual (☞) mode.

NOTA

