
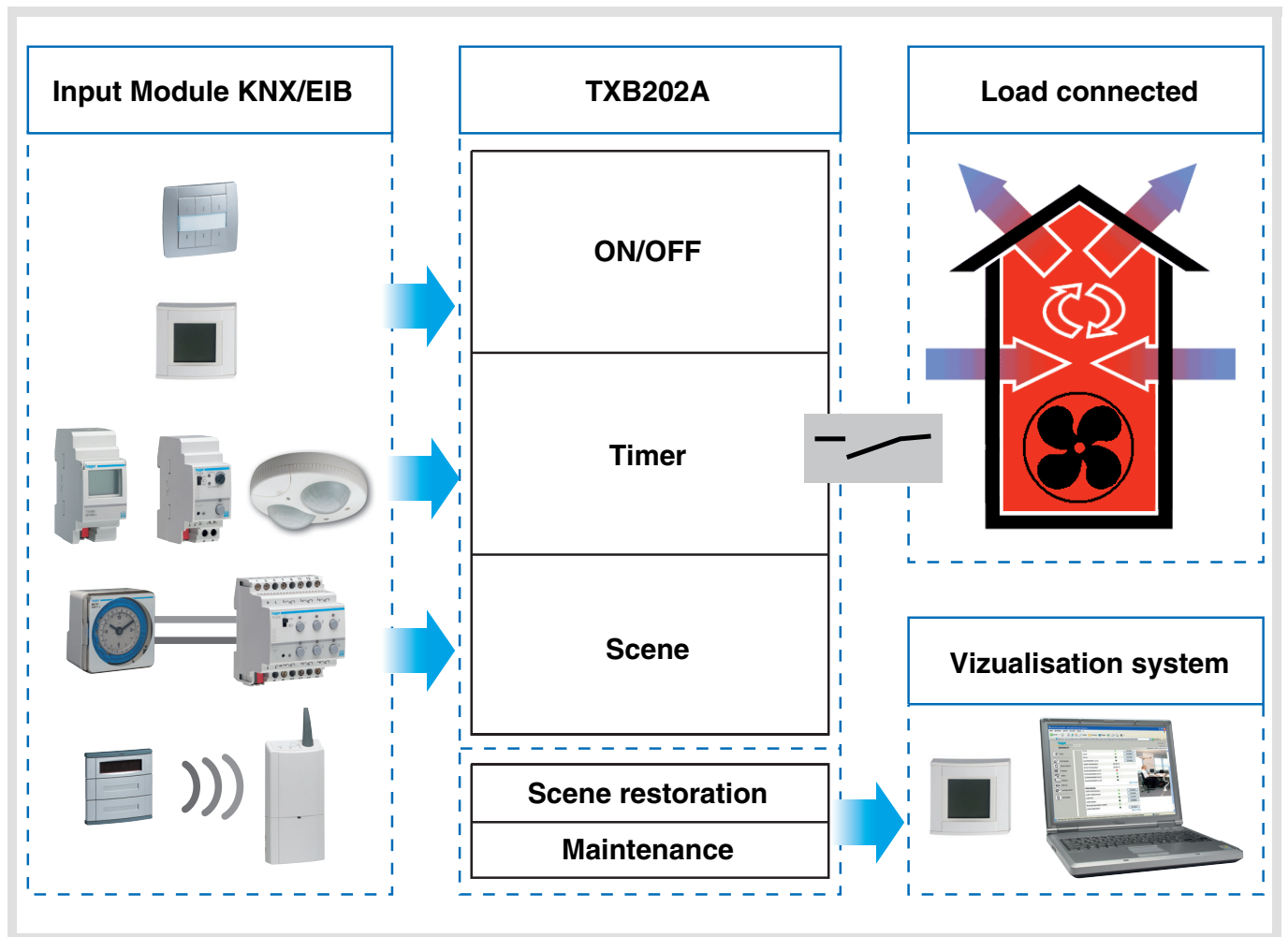


## Tebis application software

TL202A V 1.x Lighting, Shutters and Ventilation  
Ventilation functions

|  | Product reference | Product designation                 |
|---|-------------------|-------------------------------------|
|   | TXB202A           | 2-output module, 4A 230V~, embedded |



### Summary

|   |   |
|---|---|
| 1. Presentation of the TL202A application's Ventilation functions ..... | 2 |
| 2. Ventilation function configuration and parameters.....               | 3 |
| 2.1 General parameters.....   | 3 |
| 2.2 Objects List.....   | 4 |
| 2.3 Function descriptions.....  | 4 |
| 3. Main characteristics .....   | 8 |
| 4. Physical addressing .....  | 8 |

## 1. Presentation of the TL202A application's Ventilation functions

The TL202A application software allows the 2 outputs to be configured for Ventilation applications. The main functions are the following:

### ■ ON/OFF

The ON/OFF function allows you to select a ventilation speed, depending on which of the outputs is activated:

- Speed 1 is enabled by default (Output 1 set to OFF and Output 2 set to OFF).
- The reception of an ON command on Output 1 enables Speed 2.
- The reception of an ON command on Output 2 enables Speed 3.
- The reception of an OFF command on Output 1 or Output 2 always enables Speed 1.

The command may come from pushbuttons.

### ■ Timer

The Timer function allows you to select a ventilation speed for an adjustable time.

The ventilation speed that will be effective when using the timer depends on which output's timer is activated:

- The reception of an ON Timer command on Output 1 enables Speed 2 for the set time. Speed 1 is enabled at the end of the set time or upon reception of an OFF Timer command.
- The reception of an ON Timer command on Output 2 enables Speed 3 for the set time; Speed 1 is enabled at the end of the timer's set time or upon reception of an OFF Timer command.

### ■ Scene

The Scene function groups a set of outputs. These outputs can be set to an adjustable pre-defined status and therefore activate one of the 3 ventilation speeds. Pressing a single pushbutton activates a scene.

## 2. Ventilation function configuration and parameters

### 2.1 General parameters

■ ETS version selection

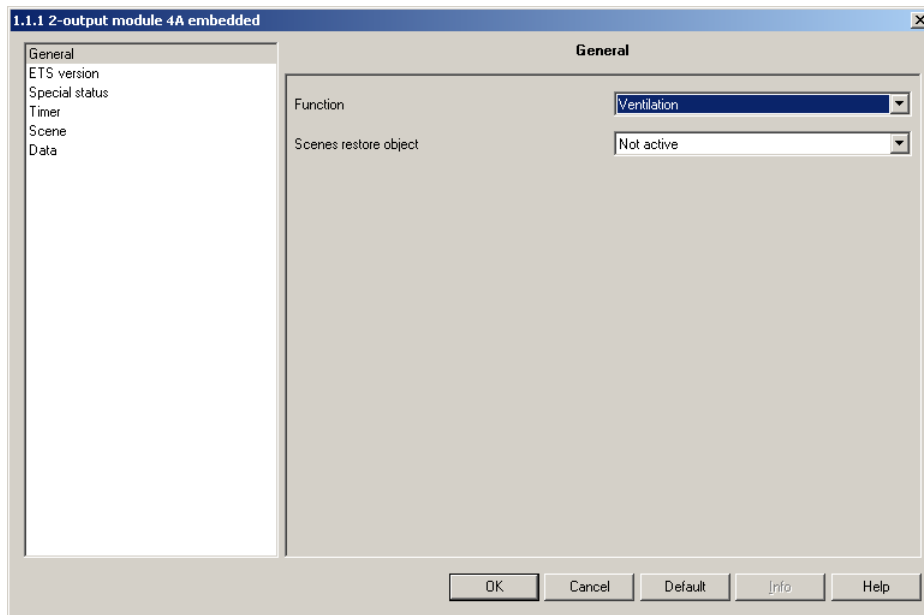
This parameter allows the presentation of the parameters to be optimised according to the ETS version used. Go to the ETS Version screen and select the required version: ETS2 or ETS3.

Default value: ETS3.

■ Function selection

Go to the General screen and select Ventilation. The output default setting is Lighting

→ Parameter



Screen 1

■ Other parameters

| Designation                                       | Description  | Values  |
|---|--|---|
| Scene restore object<br>(see also Scene function) | If the value is Authorized, the values associated to the scenes at the last download are restored upon reception of this object. | Inhibited, Authorized.<br>Default value: Inhibited. |

## 2.2 Objects List

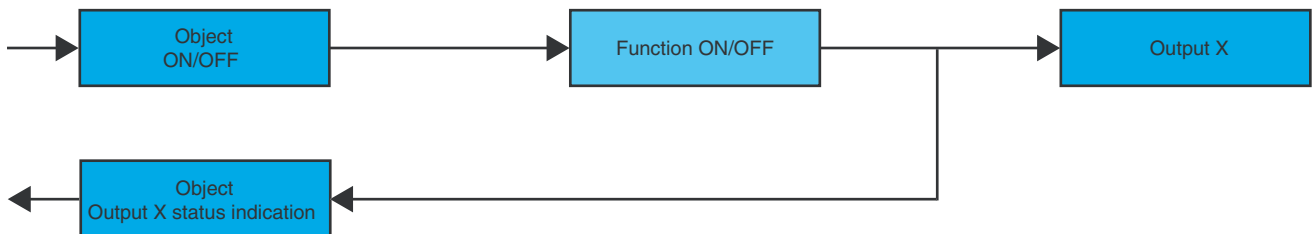
| Number | Name     | Object Function            | Length | C | R | W | T | U | Priority |
|--------|----------|----------------------------|--------|---|---|---|---|---|----------|
| 0      | Output 1 | ON/OFF                     | 1 bit  | C | R | W | - | U | Low      |
| 1      | Output 1 | Timer                      | 1 bit  | C | R | W | - | U | Low      |
| 2      | Output 1 | Priority                   | 2 bit  | C | R | W | - | U | Low      |
| 3      | Output 1 | Scene                      | 1 Byte | C | R | W | - | U | Low      |
| 4      | Output 1 | Status indication          | 1 bit  | C | R | - | T | U | Low      |
| 5      | Output 2 | ON/OFF                     | 1 bit  | C | R | W | - | U | Low      |
| 6      | Output 2 | Timer                      | 1 bit  | C | R | W | - | U | Low      |
| 7      | Output 2 | Priority                   | 2 bit  | C | R | W | - | U | Low      |
| 8      | Output 2 | Scene                      | 1 Byte | C | R | W | - | U | Low      |
| 9      | Output 2 | Status indication          | 1 bit  | C | R | - | T | U | Low      |
| 12     | Output 1 | Jamming                    | 1 bit  | C | R | W | - | U | Low      |
| 15     | Output 1 | Time delayed remote switch | 1 bit  | C | R | W | - | U | Low      |
| 16     | Output 2 | Jamming                    | 1 bit  | C | R | W | - | U | Low      |
| 19     | Output 2 | Time delayed remote switch | 1 bit  | C | R | W | - | U | Low      |

## 2.3 Function descriptions

### ■ ON/OFF functions and Status indication

The ON/OFF function allows you to select a ventilation speed, depending on which of the outputs is activated:

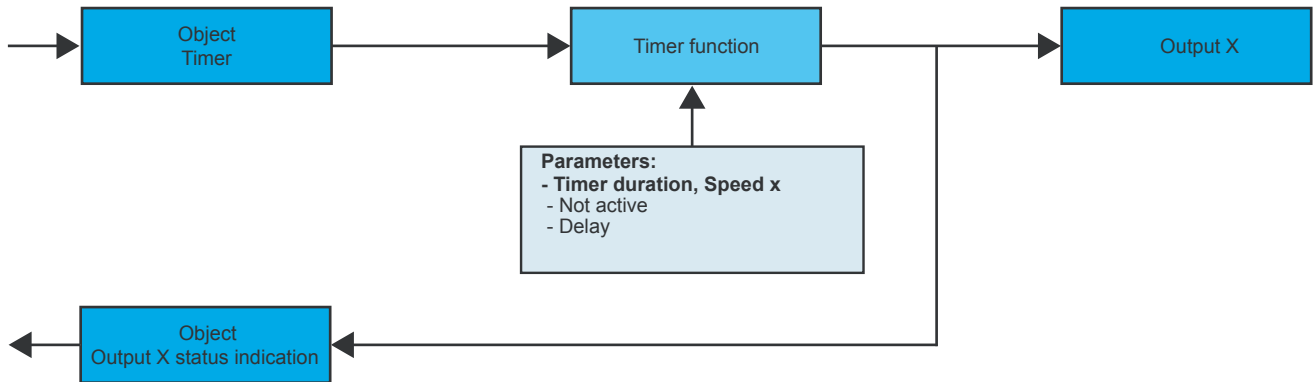
- Speed 1 is enabled by default (Output 1 set to OFF and Output 2 set to OFF).
- The reception of an ON command on Output 1 enables Speed 2.
- The reception of an ON command on Output 2 enables Speed 3.
- The reception of an OFF command on Output 1 or Output 2 always enables Speed 1.



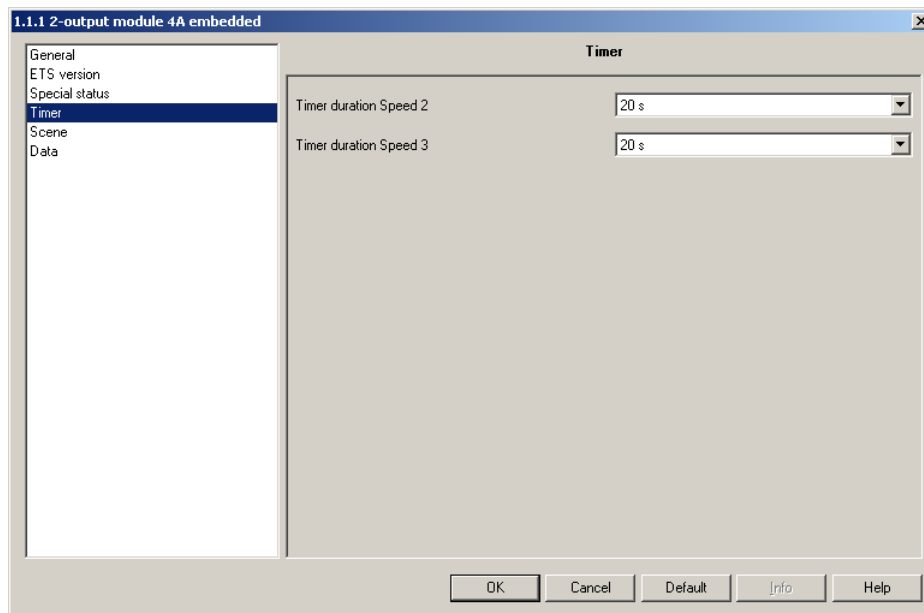
■ Timer function

The Timer function allows you to select a ventilation speed for an adjustable time. The ventilation speed that will be effective when using the timer depends on which output's timer is activated:

- The reception of an ON Timer command on Output 1 enables Speed 2 for the set time. Speed 1 is enabled at the end of the set time or upon reception of an OFF Timer command.
- The reception of an ON Timer command on Output 2 enables Speed 3 for the set time; Speed 1 is enabled at the end of the timer's set time or upon reception of an OFF Timer command.



→ Parameters



Screen 2

| Designation             | Description  | Values   |
|-------------------------|--|--|
| Timer duration, Speed 2 | This parameter adjusts the activation duration of Speed 2. | Inhibited, Range [0.5 s 24 h]*<br>Default value: 20 s. |
| Timer duration, Speed 3 | This parameter adjusts the activation duration of Speed 3  | Inhibited, Range [0.5 s 24 h]*<br>Default value: 20 s. |

\* Setting range [0.5 s 24 h]

0.5 s, 1 s, 2 s, 3 s, 5 s, 10 s, 15 s, 20 s, 30 s, 40 s, 45 s, 50 s, 1 min, 1 min 15 s, 1 min 30 s, 2 min, 2 min 30 s, 3 min, 4 min, 5 min, 6 min, 7 min, 8 min, 9 min, 10 min, 11 min, 12 min, 13 min, 14 min, 15 min, 20 min, 30 min, 40 min, 50 min, 1 h, 1 h 30 min, 2 h, 2 h 30 min, 3 h, 3 h 30 min, 4 h, 5 h, 6 h, 12 h, 24 h.

**■ Scene function**

The Scene function groups a set of outputs. These outputs can be set to an adjustable pre-defined status and therefore activate one of the 3 ventilation speeds.

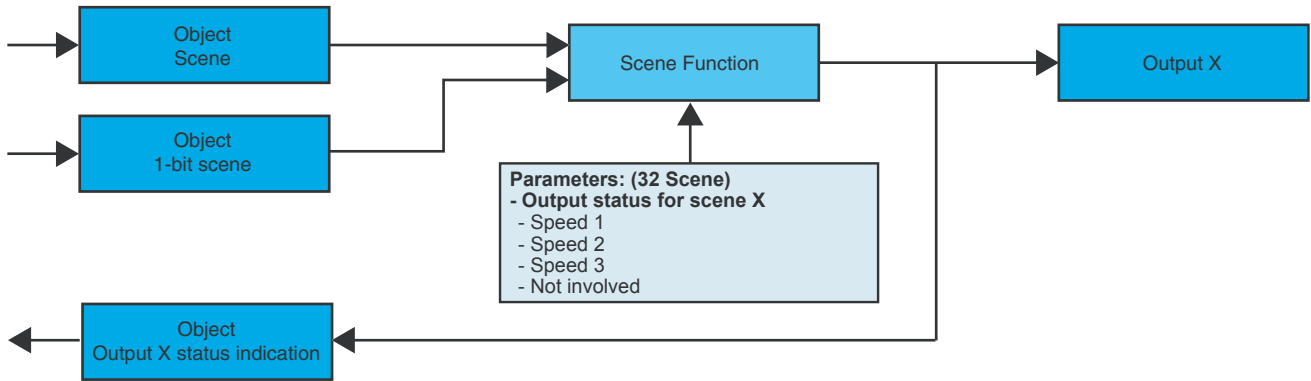
A scene is started by the Scene object.

The group of outputs is created beforehand by establishing the link between the outputs that must belong to the scene and the pushbutton that will trigger the scene.

Each output may be integrated into 32 different scenes.

The status of each output may be defined by parameterising and by learning in the room using the installation pushbuttons.

**A. Configuration and storing by parameterisation**



| Designation                              | Description   | Values   |
|--|---|--|
| Output status for scene X                | This parameter defines the status of the output associated to scene X.                                      | Speed 1, Speed 2, Speed 3, Not involved.<br>Default value: Not involved. |
| Storing                                  | This parameter authorizes or forbids scene storing.   | Authorized, Forbidden.<br>Default value: Authorized.                     |
| 1-bit scene activation                   | This parameter allows 2 of the 32 possible scenes to be activated, with the help of the 1-bit scene object. | Not active, Active.<br>Default value: Not active.                        |
| Scene A activation / Scene B activation* |   | No active scene, Scene 1 to Scene 32.<br>Default value: No active scene. |

**B. Learning and storing in the room**

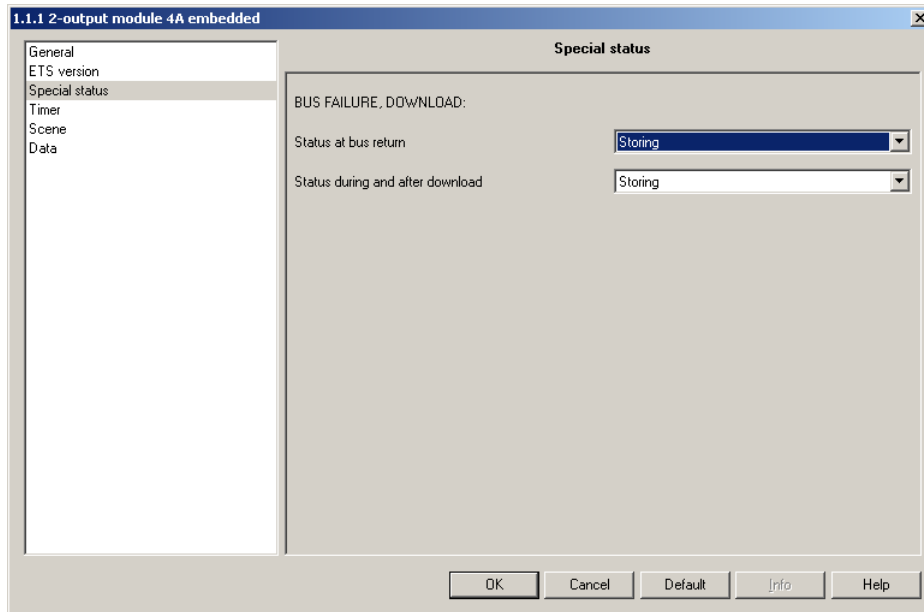
This procedure modifies and stores a scene by local action on the pushbuttons located in the room.

- Activate the scene by pressing briefly on the room pushbutton that triggers the scene.
- Set the outputs to the required status (activate the required speed) using the pushbuttons that control them individually.
- Store the output statuses by pressing the room pushbutton that triggers the scene for longer than 5 s.

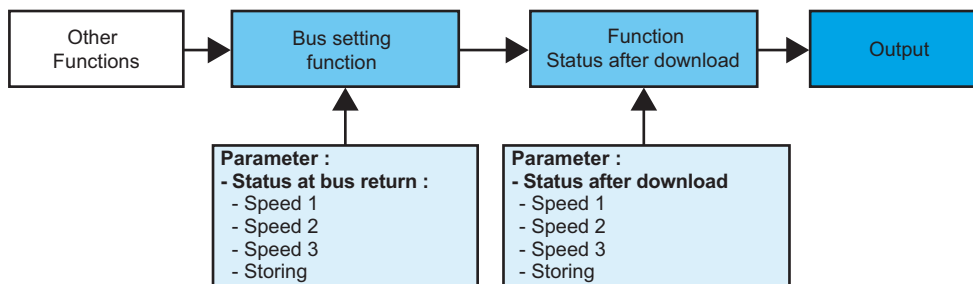
■ Special statuses

The parameters grouped in this section define the output behaviour in some special cases.

→ Parameter Setting screen:



Screen 3



→ Parameters

| Designation                      | Description   | Values   |
|----------------------------------|---|--|
| Status at bus return             | This parameter defines the output status applied at bus return.                       | Speed 1, Speed 2, Speed 3, Storing.<br>Default value: Storing. |
| Status during and after download | This parameter defines the ventilation speed to be applied during and after download. | Speed 1, Speed 2, Speed 3, Storing.<br>Default value: Storing. |

### 3. Main characteristics

|                                |  |
|--------------------------------|--|
| Max. number of group addresses | 252  |
| Max. number of links           | 254  |
| Objects                        | 9 in total:<br>4 per output<br>1 for scene restoration |

### 4. Physical addressing

Press pushbutton S1/Addr briefly (for less than 2 s) to perform physical addressing or to check for bus presence.

Indicator Addr ON = bus presence and product in physical addressing.

The product remains in physical addressing until the physical address has been transmitted by ETS. Press again to exit physical addressing mode.

